

MOCK NATA 1

Read the Instructions carefully.

Question paper contains 6 Sections viz.,

Section 1- contains 50 questions carrying total 115 marks (i.e. 25 questions of 3 marks, 15 questions of 2 marks and 10 questions of 1 mark).

Section 2- contains 10 questions carrying total 20 marks (i.e. 10 questions of 2 marks).

Section 3- contains 25 questions carrying total 25 marks (i.e. 25 questions of 1 mark).

Section 4- contains 15 questions carrying total 15 marks (i.e. 15 questions of 1 mark).

Section 5- contains 5 questions carrying total 5 marks (i.e. 5 questions of 1 mark).

Section 6- contains 20 questions carrying total 20 marks (i.e. 20 questions of 1 mark).

I. Answer the following: (PCQ MM: 03)

Questions 1 to 25 carry 3 marks each based on PCQ; MM 2 marks for three correct choice, one additional number if first two choices are in similar sequence as the key answer, whereas 1 minus mark for choosing wrong answer

Q1. (PCQ MM: 03) Prioritise in sequence only 3 correct answer for the given image:

- a) Asymmetrical Balance
- b) Radial Balance
- c) Pattern
- d) Harmony

ANS: B, C, D, whereas A is wrong answer



Q2. (PCQ MM: 03) Prioritise in sequence only 3 correct answer for the given image:

- a) Movement
- b) Asymmetrical Balance
- c) Rhythm
- d) Juxtaposition

ANS: B, A, C, Whereas D is wrong



Q3. (PCQ MM: 03) Prioritise in sequence only 3 correct answer for the given image:

- a) Proportion
- b) Asymmetrical balance
- c) Scale
- d) Juxtaposition Contrast

ANDS: C, D, B, whereas A is wrong



Q4. (PCQ MM: 03) Prioritise in sequence only 3 correct answer for the given image:

- a) Horizontal balance
- b) Scale
- c) Variety
- d) Asymmetrical Balance

ANS. B, D, A, whereas C is wrong



Q5. (PCQ MM: 03) Answer according to preference.

- a) Similarity
- b) Unity
- c) Asymmetrical vertical balance
- d) Contrast

ANS. B, C, A, whereas D is wrong



Q6. (PCQ MM: 03) Prioritise in sequence only 3 correct answer for the given image:

In this painting by Edgar Degas – The Rehearsal on stage

- a) Monochromatic
- b) Rhythm
- c) Unity
- d) Symmetrical balance

ANS: C, A, B, whereas D is wrong



Q7. (PCQ MM: 03) Prioritise in sequence only 3 correct answer for the given image:

- a) Unity
- b) Force
- c) Repetition
- d) Bilaterally Symmetrical

ANS: A, C, B, whereas D is wrong



Q8. (PCQ MM: 03) Prioritise in sequence only 3 correct answer for the given image:

- a) Rembrandt
- b) Picasso and cubism
- c) Juxtaposition of Impasto
- d) Self Portrait

ANS. A, D, C whereas b is wrong



Q9. (PCQ MM: 03) Given is an image of Air Force Academy in Colorado Springs.

Identify which set is most suitable to it.

- a) Rhythm
- b) Repetition
- c) Hierarchy
- d) Continuity



ANS. D, B, A, whereas C is wrong

Q10. (PCQ MM: 03) Prioritise in sequence only 3 correct answer for the given image:

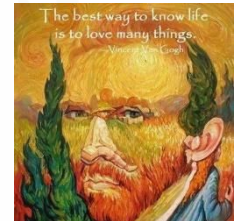
- a) Pointillism
- b) Proximity and Similarity
- c) Variety
- d) Neo-impressionism



ANS. A, D, B, whereas C is not wrong

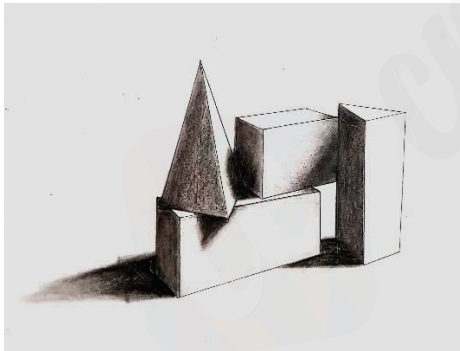
Q11. (PCQ MM: 03) Prioritise in sequence only 3 correct answer for the given image:

- a) Multi-stability perception
- b) Vincent Van Gough
- c) Figure and ground
- d) Post-Impressionists



ANS: A, C, B, whereas D is not wrong

Q 12. (PCQ MM: 03) Prioritise in sequence only 3 correct answer for the given image (03)



- a) Pyramidal composition
- b) Sciography
- c) One point perspective
- d) Multiple point perspective

ANS: B, D, A, whereas C is wrong

Q 13. (MSQ MM: 02) If the perspective line of the cuboid is pointing South and North in two different cases, what will be the time position of the bulb casting this broadening shadow?

- a) 3 pm
- b) 10 am
- c) 11 am
- d) 5 pm

ANS: C and D, whereas rest two are wrong answers.

Q13B (MSQ MM: 01, half mark for one correct answer). Tick the most appropriate set of answer that suits this drawing.

- a) The composition is Unstable.
- b) The composition is Stable.
- c) The composition represents Emphasis.
- d) The composition represents Unity.

ANS: B and C, whereas other two are wrong

Q14. (PCQ MM: 03) Observe the given picture and answer the following-

Prioritise in sequence only 3 correct answer for the given image:

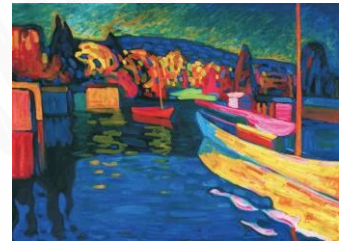
- a) Human figures in action
- b) Two-point perspective composition.
- c) Proportion
- d) Hierarchy



ANS: A, B, C, whereas D is wrong

Q15. (PCQ MM: 03) Prioritise in sequence only 3 correct answer for the given image:

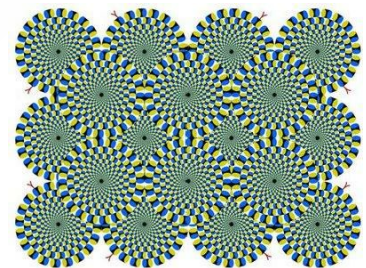
- a) Textures
- b) Horizontal composition
- c) Contrast
- d) Variety



ANS: D, C, A, whereas B is wrong

Q16. (PCQ MM: 03) Prioritise in sequence only 3 correct answer for the given image:

- a) Radially Symmetrical
- b) Movement Illusion
- c) Pointillism
- d) Pattern



ANS: B, A, D, whereas C is wrong

Q17. (PCQ MM: 03) Prioritise in sequence only 3 correct answer for the given image:

- a) Digital Art
- b) Monochromatic
- c) Emphasis
- d) Pyramidal composition



ANS: A, D, B whereas C is wrong

Q18. (PCQ MM: 03) Observe the image and Prioritise in sequence only 3 correct answer for the given image:

- a) Repetition
- b) Emphasis
- c) Graffiti Art
- d) Pop up Art

ANS: D, C, B, whereas A is wrong



Q19. (PCQ MM: 03) Prioritise in sequence only 3 correct answer for the given image:

- a) Movement
- b) Rhythm
- c) Variety
- d) Continuity

ANS: B, A, D, whereas C is wrong answer



Q20. (PCQ MM: 03) Observe the image and arrange in the order of preference only 3 correct answer-

- a) Proximity
- b) Juxtaposition contrast
- c) Unity
- d) Continuity

ANS: B, D, A, whereas C is wrong answer

The "iconic ring-shape" hole



Iconic ring-shape ... the Sheraton Huzhou is inspired by the form of a humpback bridge.
Photograph: MAD Architects

Q 21. (PCQ MM: 03) Observe the given image carefully and arrange 3 correct options as per preference: -

The building is depicting -

- a) A 3-D Pointillism
- b) Neo-impressionism
- c) Rhythm
- d) Juxtaposition Contrast



TripAdvisor

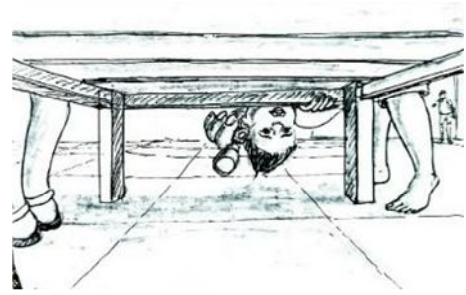


Selfridges building curving exterior -
Picture of Selfridges ...

ANS: A, B, C, whereas D is wrong answer

Q 22. (PCQ MM: 03) Arrange the 3 correct answer options in preference order-

- a) One point perspective
- b) Symmetrical balance
- c) Horizontal asymmetrical balance
- d) Emphasis



ANS: C, A, D, whereas B is wrong answer

Q 23. (PCQ MM: 03) Prioritise in sequence only 3 correct answer for the given image:

- a) Two-point perspective
- b) Asymmetrical Composition
- c) Common fate
- d) Facade of building

Mesarska cesta



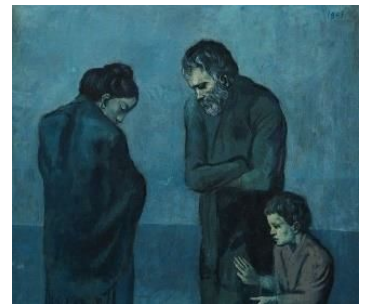
Dot Envelope by OFIS Arhitekti

Slovenian architects OFIS Arhitekti have completed the facade of a shopping mall in Ljubljana, Slovenia.

ANS: D, B, C, whereas A is wrong answer

Q 24. (PCQ MM: 03) Observe and arrange 3 correct options on the basis of preference-

- a) Low value Contrast
- b) Monochromatic
- c) Symmetrical Horizontal Balance
- d) Unity



ANS: D, A, B, whereas C is wrong

Q 25. (PCQ MM: 03) Observe the image and arrange 3 correct answers as per preference-

- a) Juxtaposition Contrast
- b) Vertical Balance
- c) Rhythm
- d) Asymmetrical Balance, Unity and Continuity



ANS: D, A, C, whereas B is wrong answer

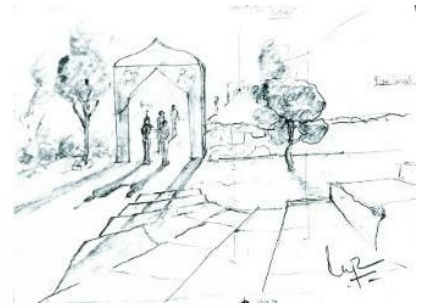
Answer the following on the bases of multiple selection answers-

Q26. (MSQ MM: 02) Observe the given image and choose the multiple correct answers on the possibilities of time with the Sun position-

Identify the time of the scene-

- a) 11 am
- b) 5 pm
- c) 2 pm
- d) 9 am

ANS: A and B



Q27. (MSQ MM: 02) Observe the given image and select the multiple-choice answers:

- a) Transparent object study
- b) Unstable composition
- c) Stable composition
- d) Balanced composition

ANS. A and C



Q28. (MSQ MM: 02) Identify the light source in the same picture and choose two correct possible answers:

- a) Top
- b) 45 degree left
- c) 45 degree right
- d) multiple light source

ANS: B and D

Q29. (MSQ MM: 02) Observe the image and choose 2 correct answers-

- a) Juxtaposition architecture
- b) Asymmetric balance
- c) Colour contrast
- d) Symmetrical balanced Architecture

ANS: B and A



Luxury Holidays
Jumeirah Beach Hotel, Dubai |
LuxuryHolidays.co.uk

Visit

Q30. (MSQ MM: 02) Observe the image and choose 2 correct answers-

Q1. The sketch is –

- a) Three-point perspective sketch
- b) Two-point perspective sketch
- c) One- point perspective Line sketch
- d) Vanishing points are not visible in the sketch.



ANS: A and D

Q31. (MSQ MM: 02) Choose only two correct answers.

- a) Symmetrical Balance
- b) High Value Contrast
- c) Emphasis
- d) low Value contrast

ANS: C and D



Q32. A. (MCQ M: 01) Identify the image-



A. "Twin tower "

B. Empire state building

C. pentagon

D. White house

}

ANS. D

and Q 32 B (MCQ MM: 01) Where is it placed:

- a) London b) Paris c) Milan d) Washington

ANS: D

Q 32 B. (MSQ MM: 02) Two Emotions depicted by the building above:

- a) Stability b) height c) Strength d) Hierarchy

ANS. A and C

Q33. (MSQ MM: 02) Select two correct answers:

Blue is a? a) Hot colour b) Cool colour c) Royal colour d) Colour of Hierarchy



ANS: B and D

Q 34. (MSQ MM: 02) Which of the following are 2 complimentary colour schemes?

- a) Green- Yellow
- b) Yellow –Violet
- c) Blue – red
- d) Red – green

ANS: B and D

Q35. (MSQ MM: 02) Find the two Gestalt Laws from the options given below-

- a) Similarity
- b) Textures
- c) Hierarchy
- d) Symmetry

ANS: A and D

Q 36. (MSQ MM: 02) Choose the 2 correct options with reference to given image -

- a) Multiple point Perspective
- b) Unbalanced Composition
- c) Above eye level sketch
- d) Stable composition



ANS: A and C

Q37. (MSQ MM: 02) Choose the 2 correct answers with reference to the given logo-

- a) Similarity
- b) Unity
- c) Continuity
- d) Figure and ground



ANS: A and C

Q38. (MSQ MM: 02) Given is an image of which two of the following-

- a) Bezold effect
- b) Thatcher effect
- c) Monochrome
- d) Dithering effect



ANS: C and D

Q39. (MSQ MM: 02) Choose two correct answers-

- a) Law of Pragnanz
- b) Law of Similarity
- c) Law of Continuity
- d) Law of Common fate



ANS: A and D

Q40. (MSQ MM: 02) Choose two possible correct answer

- a) Law of continuity
- b) Law of Similarity
- c) Law of Proximity
- d) Law of Symmetry



ANS. A B

MCQs: One Mark each

Q41. (MCQ MM: 01) Identify One of Gestalt principle used in the given photo graph-

- a) Law of common fate
- b) law of closure
- c) Law of continuity
- d) Law of proximity



ANS: C

Q42. (MCQ MM: 01) Choose One correct answer

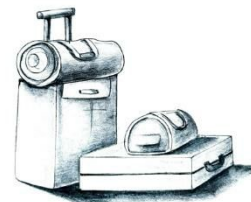
- a) Unity
- b) Harmony by shape
- c) Rhythm
- d) Continuity



ANS. B

Q43. (MCQ MM: 01) Select the correct answer-

- a) One-point composition
- b) Aesthetically appealing
- c) Balanced
- d) Two-point perspective sketch



ANS. B

Q44. (MCQ MM: 01) The given image is an example of -

- a) Simultaneous Contrast
- b) Bezold effect
- c) The Corn sweet Illusion
- d) Chromostereopsis



ANS: B

Q45. (MCQ MM: 01) The apparent shift in hue of monochromatic light when white light is added, thus increasing total illumination is

- a) Abney effect
- b) Mach bands
- c) The Hermann grid illusion
- d) Chromostereopsis

ANS: A

Q46. (MCQ MM: 01) Which One option is applicable on the given image of

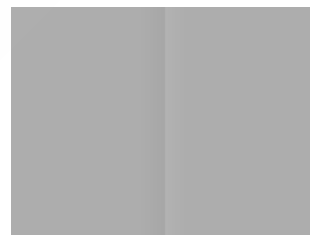
- a) Metamerism
- b) Thatcher effect
- c) The Obama-effect
- d) The Corn sweet Illusion



ANS: B

Q47. (MCQ MM: 01) In the image here, the left part seems to be darker than the right one but in fact the brightness of both areas is exactly the same. Which effect is it-

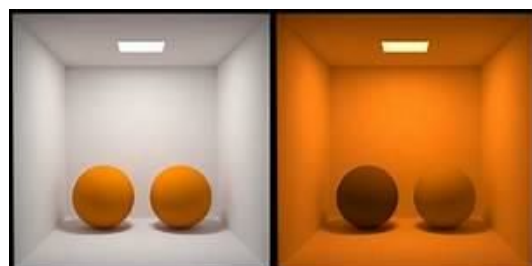
- a) Mach bands
- b) Simultaneous contrast
- c) The Corn sweet illusion
- d) The Abney effect.



ANS: C

Q48. (MCQ MM: 01) A phenomenon that occurs when two colours appear to match under one lighting condition, but not when the light changes is defined as –

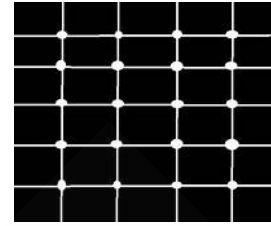
- a) Metamerism
- b) Simultaneous contrast
- c) Asthenopia
- d) None of the above



ANS: A

Q49. (MCQ MM: 01) Give is an example of an illusion where the dark dots seem to appear and disappear at intersections. Identify the illusion –

- a) Scintillating Grid illusion
- b) Herman Grid illusion
- c) Simultaneous Contrast
- d) The Corn sweet Illusion



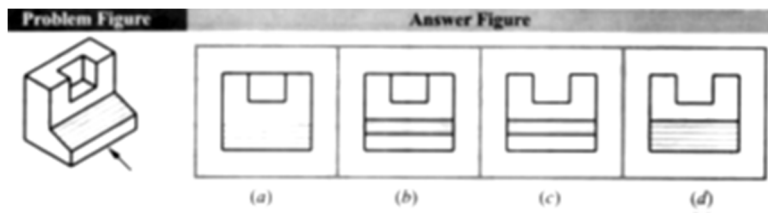
ANS: B

Q50. (MCQ MM: 01) The dominant colour in a picture is known as –

- a) Cool colour
- b) Split complementary colours
- c) Neutral colours
- d) Local colours

ANS: D

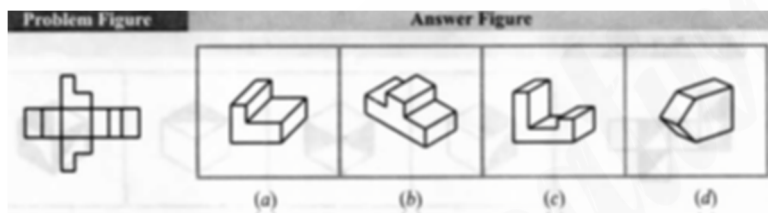
1. Identify the correct 3D view of the objects from answer figures shown on right-hand side and 3D Views on the left-hand side



- A
- B
- C
- D

Ans. B

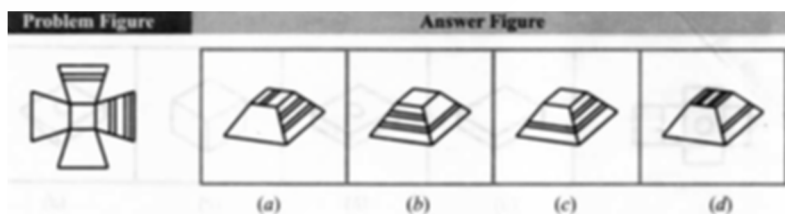
2. Identify the correct 3D view of the objects from answer figures shown on right-hand side and 3D Views on the left-hand side



- A
- B
- C
- D

Ans. A

3. Identify the correct 3D view of the objects from answer figures shown on right-hand side and 3D Views on the left-hand side

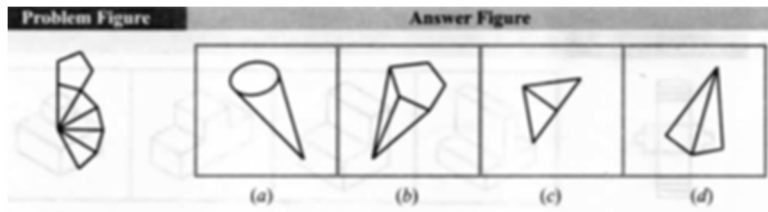


- A
- B
- C

- D

Ans. B

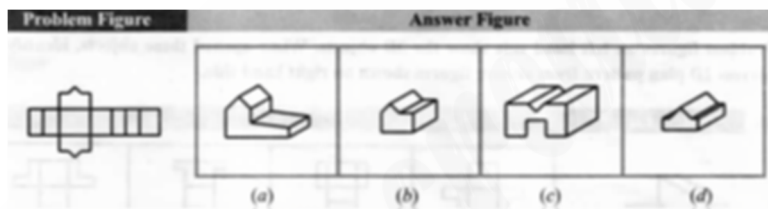
4. Identify the correct 3D view of the objects from answer figures shown on right-hand side and 3D Views on the left-hand side



- A
- B
- C
- D

ANS. B

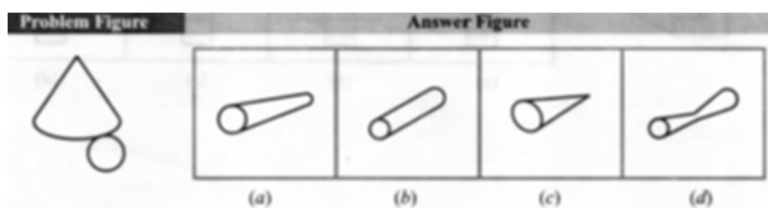
5. Identify the correct 3D view of the objects from answer figures shown on right-hand side and 3D Views on the left-hand side



- A
- B
- C
- D

Ans. D

6. Identify the correct 3D view of the objects from answer figures shown on right-hand side and 3D Views on the left-hand side



- A
- B
- C
- D

Ans. C

7.

Select a figure from amongst the Answer Figures which will continue the same series as established by the five Problem Figures.

Problem Figures:

Δ	Δ	\bigcirc	\bigcirc	$=$
$\bigcirc \times$	$= \bigcirc$	$= S$	$\times =$	$\times \Delta$
$S =$	$S \times$	$\Delta \times$	ΔS	$\bigcirc S$

(A) (B) (C) (D) (E)

Answer Figures:

S	$=$	\bigcirc	Δ	\times
$= \times$	$S \times$	$S \times$	$S \times$	$S =$
$\bigcirc \Delta$	$\bigcirc \Delta$	$\Delta =$	$\bigcirc =$	$\bigcirc \Delta$

(1) (2) (3) (4) (5)

- A
- B
- C
- D
- E

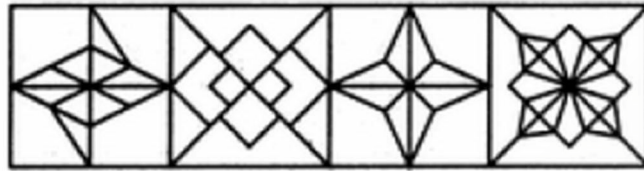
Ans. B

8.

Find out the alternative figure which contains figure (X) as its part.



(X)



(1)

(2)

(3)

(4)

- A
- B
- C
- D

Ans. D

9.

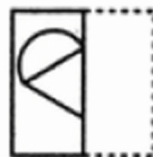
Find out from amongst the four alternatives as to how the pattern would appear when the transparent sheet is folded at the dotted line.



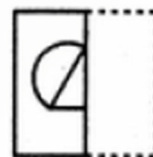
(X)



(1)



(2)



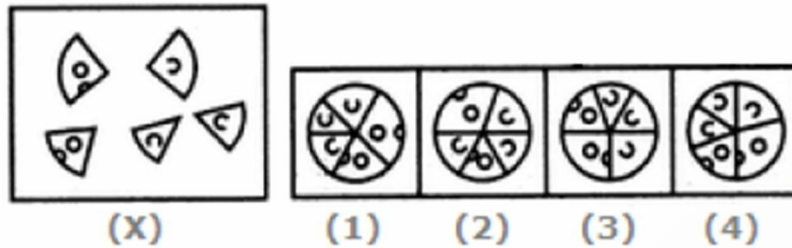
(3)

- A
- B
- C
- D

Ans. D

10.

Find out which of the figures (1), (2), (3) and (4) can be formed from the pieces given in figure (X).



- A
- B
- C
- D

Ans. C

11.

Select a suitable figure from the Answer Figures that would replace the question mark (?).

Problem Figures:



- (A)
- (B)
- (C)
- (D)

Answer Figures:



- (1)
- (2)
- (3)
- (4)
- (5)

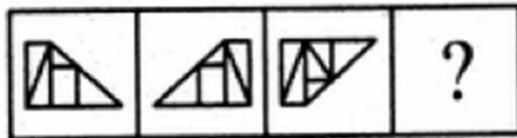
- A
- B
- C
- D

Ans. C

12.

Select a suitable figure from the Answer Figures that would replace the question mark (?).

Problem Figures:



(A) (B) (C) (D)

Answer Figures:



(1) (2) (3) (4) (5)

- A
- B
- C
- D

Ans. D

13.

Choose the alternative which is closely resembles the mirror image of the given combination.

247596

(1) 695742

(2) 965742

(3) 247596

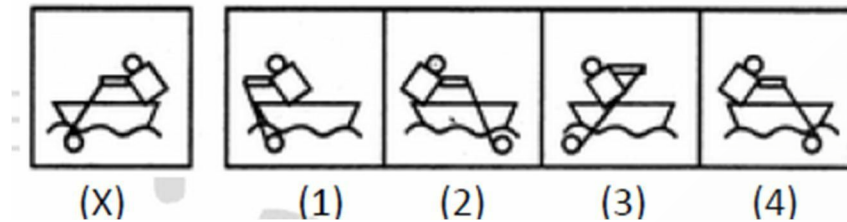
(4) 965742

- A
- B
- C
- D

Ans. D

14.

Choose the correct mirror image of the given figure (X) from amongst the four alternatives.

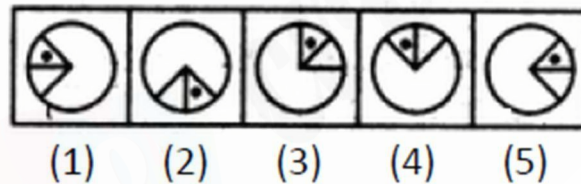


- A
- B
- C
- D

Ans. D

15.

Choose the figure which is different from the rest.



- A
- B
- C
- D
- E

Ans. A

16. The radius of a spherical nucleus as measured by electron scattering is 3.6 fm. What is the mass number of the nucleus most likely to be?

- 27
- 40
- 56
- 120

Ans. 27

17.

If a_1, a_2, \dots, a_n are in H.P., then the expression $a_1 a_2 + a_2 a_3 + \dots + a_{n-1} a_n$ is equal to

- $n(a_1 + a_n)$
- $(n-1)(a_1 - a_n)$
- $na_1 a_n$
- $(n-1)a_1 a_n$
- $(n-1)a_1 a_n$

Ans.

18.

If the letters of word SACHIN are arranged in all possible ways and these words are written out as in dictionary, then the word SACHIN appears at serial number

- 601
- 602
- 603
- 604

Ans. 601

19.

Let $A = \begin{pmatrix} 1 & 2 \\ 3 & 4 \end{pmatrix}$ and $B = \begin{pmatrix} a & 0 \\ 0 & b \end{pmatrix}$, $a, b \in \mathbb{N}$.

Then

- there cannot exist and B such that $AB = BA$
- there exists exactly one B such that $AB = BA$
- there exists exactly one B such that $AB = BA$
- there exist infinitely many B 's such that $AB = BA$

there exist infinitely many B 's such that
Ans. $AB = BA$

20

Let f be differentiable for all x .

If $f(1) = -2$ and $f'(x) \geq 2$ for $x \in [1, 6]$, then

- $f(6) \geq 8$
- $f(6) < 8$
- $f(6) < 5$
- $f(6) = 5$

Ans. $f(6) \geq 8$

21.

The number of values of x in the interval $[0, 3\pi]$ satisfying the equation

$$2\sin^2 x + 5\sin x - 3 = 0 \text{ is}$$

- 4
- 6
- 1

- 2

Ans. 4

22.

10 students can do a job in 8 days but on the starting day two of them informed that they are not coming. By what fraction will the number of days required for doing the whole work get increased.

- a. 2 b. 1 c. $\frac{1}{2}$ d. $\frac{1}{4}$

- A
- B
- C
- D

Ans. D

23.

Ratio of a two digit number to the sum of its digits is 4. Ratio of the tens digit to the unit digit of the number is

- (a) $\frac{2}{3}$ (b) $\frac{4}{5}$ (c) $\frac{1}{2}$ (d) more than one value

- A
- B
- C
- D

Ans. C

24.

For a social work campaign, which required 200 volunteers to clean 50 villages, if 16 volunteers did not turn up, how many villages can be are cleaned now?

- (a) 40 (b) 34 (c) 46 (d) 42

- A
- B
- C
- D

Ans. C

25.

Mohan spends 40% of his income on rent, 20% on food, 10% on entertainment and saves the rest. If he saves a net amount of Rs. 4380, find his income.

- a. Rs. 21,900 b. Rs. 14,600 c. Rs. 1,46,000 d. Rs. 29,200

- A
- B
- C
- D

Ans. B

26.

Traveling from home to office, if I increase my speed by 12.5% than my usual speed, what percent of time would I save?

- a. 10% b. 11.11% c. 12.5% d. 15%

- A
- B
- C
- D

Ans. B

27. The question has a main sentence followed by four sentences labeled as a, b, c, and d.

Choose the ordered pair of statements where the first statement implies the

second and both the statements are logically consistent with the main statement.

If it is not a real Havana, it is not a Ropo.

A. It is a real Havana

B. It is not a real Havana

C. It is not a Ropo

D. It is a Ropo

- a. AD b. CB c. DA d. BD

- A
- B
- C
- D

Ans. C

28.

8, 9, 8, 7, 10, 9, 6, 11, 10, ?, 12

(1) 5

(2) 7

(3) 8

(4) 11

- A
- B
- C
- D

Ans. A

29.

If CODING is coded as XLWRMT, then DECODING is coded as

(1) VWXLWRMT

(2) WUXLWRMT

(3) WVXLWRMT

(4) WVWRXLMT

- A
- B
- C
- D

Ans. C

30

Five boys are standing in a row facing east. Mohan is standing between Umesh and Suresh. Prakash is standing to the immediate right of Umesh. Anand is standing at the one of the ends of the row. Who is standing at the other end of the row?

(1) Prakash

(2) Suresh

(3) Mohan

(4) Suresh or Prakash

- A
- B
- C
- D

Ans. B

31.

The length and breadth of a room are 8 m and 6 m respectively. A cat runs along all the four walls and finally along a diagonal order to catch a rat. How much total distance is covered by the cat ?

- 38
- 19
- 16
- 40

Ans. 38

32. The self inductance L of a solenoid of length l and area of cross-section A , with a fixed number of turns N increases as

- l and A increase
- l decreases and A increases
- l increases and A decreases
- both l and A decrease

Ans. l decreases and A increases

33. The electrostatic potential on the surface of a charged conducting sphere is 100 V. Two statements are made in this regard.

S1 : At any point inside the sphere, electric intensity is zero.

S2: At any point inside the sphere, the electrostatic potential is 100 V.

Which of the following is a correct statement?

- S1 is true but S2 is false
- Both S1 and S2 are false
- S1 is true, S2 is also true and S1 is the cause of S2
- S1 is true, S2 is also true but the statements are independent

Ans. C

34. A short pulse of white light is incident from air to a glass slab at normal incidence. After travelling through the slab, the first colour to emerge is

- Blue
- Green
- Violet
- Red

Ans. D

35. Two atoms are said to be isobars if

- they have same atomic number but different mass number.
- they have same number of electrons but different number of neutrons.
- they are same number of neutrons but different number of electrons.
- Sum of the number of protons and neutrons is same but the number of protons is different.

Ans. D

1. This UNESCO World Heritage Site in Delhi is the final resting place of the great grandfather of Emperor Shahjahan. It's the monument which inspired the creation of Taj Mahal in Agra.



- a. Bibi Ka Maqbara
- b. Humayun's Tomb
- c. Bulund Darwaza
- d. Jama Masjid

Ans b

2. This most famous church in Goa houses the relics of St. Francis Xavier. Located in Old Goa, it's the part of the churches and convents of Goa, which are declared as UNESCO World Heritage Site.



- a. Se Cathedral
- b. St. Peter's Basilica
- c. Chapel of Santa Catarina
- d. Basilica of Bom Jesus

Ans. d

3. Which heritage site well known for its Stepped Corridors, Sculptures and Stone Carvings in the Well?

- a. Buland Darwaza
- b. Rani Kivav
- c. Pattadakal
- d. Sun temple

Ans. b

4. Which railway station was built by Frederick William Stevens with the inspiration from Victorian Italianate Gothic Revival architecture and traditional Mughal buildings?

- a. Mountain Railways of India
- b. Chhatrapati Shivaji Terminus
- c. Delhi railway station
- d. None

Ans. b

5. Singorgarh Fort, which was making news recently, is located in which state/UT?

- a. Maharashtra
- b. Madhya Pradesh
- c. Odisha
- d. Kerala

Ans. b

6. What is the name of India's initiative to deliver Covid-19 vaccines to friendly countries?

- a. Vaccine Maitri
- b. Vaccine to Mitron
- c. Bharat Vaccine Mitra
- d. India contributes

Ans. c

7. Who has been elected as the next Director General of the International Solar Alliance (ISA)?

- a. Ajay Mathur
- b. Upendra Tripathy
- c. Ajay Kumar Bhalla
- d. Subash Chandra Khuntia

8. Hagia Sophia officially the Hagia Sophia Holy Grand Mosque and formerly the Church of Hagia Sophia, is a Late Antique place of worship in _____, designed by the Greek geometers Isidore of Miletus and Anthemius of Tralles.

- a. Jerusalem
- b. Istanbul
- c. Damascus
- d. Aleppo

Ans. b

9. Which of the following is the characteristic of the Dravida style of architecture?

- a. It is characterized by a beehive shaped curvilinear tower (called a Shikhara) made up of layer upon layer of architectural elements and a cruciform ground plan.
- b. It has pyramidal shaped central tower (called Vimana in Dravida style).
- c. Both A & B
- d. Only A

Ans: b

10. Chandigarh's Capitol Complex was in July 2016 declared by UNESCO as World Heritage. It's an Architectural Work of _____.

- a. Le Corbusier
- b. Achyut Kanvinde
- c. Laurie Baker
- d. Charles Correa

Ans. a

11. Which type of eclipse is also known as the 'Beaver moon'?

- a. Full Lunar Eclipse
- b. Partial Lunar Eclipse
- c. Penumbral Lunar Eclipse
- d. Solar Eclipse

Ans. c

12. Benjamin Netanyahu, who was making news recently, was the Prime Minister of which country?

- a. Brazil
- b. Israel
- c. Italy
- d. Germany

13. What is a volute?

- a. the crowning feature of a column or pilaster
- b. an ornamental feature shaped like a spiraled scroll
- c. type of spire
- d. a projecting bracket which generally supports a cornice or arch

Ans. b

14. Indian temples that are Buddhist or Hindu are sometimes built on a raised terrace or platform. What are these surfaces called?



- a. Jaconets
- b. Jettying
- c. Jagati
- d. Jetta

Ans. c

15. Used to decorate the roofs of Chinese official buildings, what are these small rows of figures called?



- a. Imperial Roof Design
- b. Inceptor Roof Design
- c. Implorer Roof Design
- d. Incurved Roof Design

Ans. a

The question below is given a statement followed by two assumptions numbered I and II. You have to consider the statement and the following assumptions and decide which of the assumptions is implicit in the statement.

Give answer

- (A) If only assumption I is implicit
- (B) If only assumption II is implicit
- (C) If neither I nor II is implicit
- (D) If both I and II are implicit.

1. **Statement:** In case of any difficulty in this case you may contact our company's lawyer

Assumptions:

- I. Each company has a lawyer of its own.
- II. The company's lawyer is thoroughly briefed about the case.

Answer: B

The each question below is given a statement followed by two conclusions numbered I and II. You have to assume everything in the statement to be true, then consider the two conclusions together and decide which of them logically follows beyond a reasonable doubt from the information given in the statement.

Give answer:

- (A) If only conclusion I follows
- (B) If only conclusion II follows
- (C) If either I or II follows
- (D) If neither I nor II follows and
- (E) If both I and II follow.

2. **Statement:** Company Z is making such camera that you can take perfect photos even in bad weather.

Conclusions:

- I. No other company has such a manufacturing camera unit.
- II. Any common man can take perfect shots through this camera.

Answer: D

3. Mark the correct meaning:

1. The salt of the Earth

- (a) To expect something in return (b) Very good & honest/kind
(c) To support someone (d) Neat and clean

Ans: b

In each of the following question, out of the given group of wordings, choose one appropriately spelled.

4. a. exagurate b. exaggearate c. exaggerate d. exajerate

Ans. c

Read the passage and answer the question

Almost all roads present benefits, problems, and risks, though these effects vary greatly in degree. Roads provide motorized access, creating a broad spectrum of options for management, while **foreclosing** other options, such as nonmotorized recreation or wildlife refugia. Even a well-designed road system **inevitably** creates a set of changes to the local landscape, and some values are lost while others are gained. For example, road density and fish populations correlate negatively over a large area in the interior Columbia basin. The basin's environmental assessment showed that subbasins with the highest forest-integrity index were largely unroaded, and subbasins with the lowest integrity had relatively high proportions of moderate or greater road density. In general, greater short-term and long-term watershed and ecological risks are associated with building roads into unroaded areas than with upgrading, maintaining, closing, or **obliterating** existing roads.

5. What is the main idea in this passage?

- a. Roads present several advantages and disadvantages.
b. Road systems affect forest integrity and fish populations adversely.
c. Road systems affect both land and water resources adversely.
d. Road systems usually involve important tradeoffs in the environment.
e. Well designed road systems balance benefits and risks.

Answer. d

Architects and their Work -

1. Who has designed the Louvre in Paris?

- i) Philip Johnson ii) I.M. Pei iii) Tenzin Gyatso iv) Tadao Ando

2. Which of the following is designed by Tadao Ando?

- i) The Gherkin, London ii) The Therme Vals, Switzerland iii) Church of Light iv) The Shard, London

3. Which of the following buildings is not designed by Norman Foster?

- i) The Gherkin, London ii) Hearst Tower, London iii) Apple Park, California iv) The Shard, London

4. Which of the following architects was the chief planner for the city of Chandigarh?

- i) Le Corbusier ii) Louis I. Kahn iii) Frank L. Wright iv) B.V. Doshi

5. Who designed the famous building called Falling Waters?

- i) Norman Foster ii) Renzo Piano iii) Frank L. Wright iv) Alvar Aalto

History of Architecture –

1. Hagia Sophia in Istanbul is which style of architecture?

- i) Renaissance ii) Byzantine iii) Neoclassical iv) Gothic

2. Which of the following building is not an example of Gothic Architecture?

- i) Notre-dame, Paris ii) Milan Cathedral iii) Westminster Abbey, London iv) Pisa Cathedral

3. Which of the following is an example of Neo-Gothic Architecture?

- i) Chhatrapati Shivaji Terminus, Mumbai ii) United States Capitol
iii) White House, USA iv) Chrysler Building, NYC

4. Which is not a Renaissance Architecture structure?

- i) St. Peter's Basilica, Vatican City ii) Florence Cathedral
iii) St. Vitus Cathedral, Prague iv) St. Paul's Cathedral, London

5. Which of the following is an Art Deco Building?

- i) Chrysler Building, NYC ii) Villa Savoye, France
iii) Sydney Opera House iv) Dancing House, Prague

Basics of Architecture -

1. Which of the following is not a part of the sub structure?

- i) Foundation ii) Plinth Beam iii) Lintel iv) Plinth Slab

2. Which of these is used to protect the house from rain and sun?
i) Column ii) Lintel iii) Staircase iv) Beam
3. Standard height for the riser of a staircase is?
i) 200mm ii) 100mm iii) 300mm iv) 150mm
4. Which of the following is not a part of RCC?
i) Cement ii) Reinforcement iii) Brick iv) Sand
5. Which of this is not a type of brick bond?
i) Stretcher Bond ii) English Bond iii) Flemish Bond iv) Gothic Bond
6. Which of the following is not a natural material?
i) Veneer ii) Stone iii) Laminate iv) Wood
7. Standard height for the tread of a staircase is?
i) 200mm ii) 300mm iii) 100mm iv) 150mm
8. What are the vertical structural members constructed above ground level in a building?
i) Beams ii) Slab iii) Columns iv) Civil
9. What is the vertical member in a wooden structure?
i) Post ii) Joist iii) Rafter iv) Purlin
10. What is a vertical curved structure that spans an elevated space?
i) Beam ii) Arch iii) Slab iv) Lintel

Answers

Architects and their Work -

1. i)
2. iii)
3. iv)
4. i)
5. iii)

History of Architecture –

1. ii)
2. iv)
3. i)
4. iii)
5. i)

Basics of Architecture -

1. iii)
2. ii)
3. iv)
4. iii)
5. iv)
6. iii)
7. ii)

8. iii)
9. i)
10. ii)



creative edge