

SuperGrads Study Material

Part of the most Comprehensive Classroom Training, Prep Content & Test Series across the Nation.



DUJAT 2020 OFFICIAL PAPER-Shift II

Directions (Q.1-Q.3): Read the passage below carefully.

Six boys are sitting in a circle. Sameer is sitting opposite to Ramesh. Parth is sitting to the right of Ramesh but left of Deepak. Manjit is sitting left of Ramesh. Kapil is sitting right of Sameer and left of Manjit. Now Deepak and Kapil, Manjit and Ramesh mutually exchange their positions.

1. Who will be sitting opposite to Manjit?
(a) Sameer (b) Ramesh (c) Kapil (d) Deepak
2. Who will be sitting left of kapil?
(a) Deepak (b) Parth (c) Ramesh (d) Sameer
3. Who will be sitting left to Parth?
(a) Sameer (b) Manjit (c) Ramesh (d) Deepak

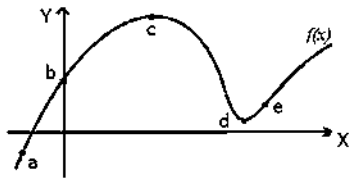
Directions (Q.4-Q.8): Read the passage below very carefully.

In an auditorium the first five front row seats are reserved for VIPs. Let's name them VIP 1, VIP 2, VIP 3, VIP 4, and VIP 5. They are wearing traditional Yellow, Green, Purple, Red and Blue kurtas, but not in the same order. The name of the VIPs are Yudhistir, Bheem, Arjun, Nakul, and Sahdev, again not in any particular order. The organizer can recognise the VIPs from the color of their kurtas. - The VIP in the first seat is wearing a red kurta. - The VIP wearing a blue kurta is seated between the VIPs wearing red and green kurta. - The VIP in the fifth seat is wearing a purple kurta. - The VIP 4 wears a yellow kurta. - Yudhistir is seated next to Nakul. - Sahdev wears a green kurta. - Bheem is sitting between Arjun and Sahdev. - Nakul is on the fifth seat.

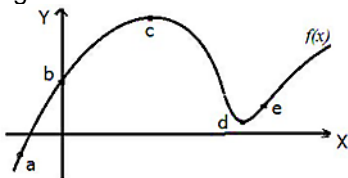
4. Who is VIP 4?
(a) Yudhistir (b) Bheem (c) Arjun (d) Sahdev
5. Who is seated on the first seat?
(a) Yudhistir (b) Bheem (c) Arjun (d) Sahdev
6. What is the color of the kurta of VIP 1?
(a) Yellow (b) Green (c) Purple (d) Red
7. Who is seated between VIP 2 and VIP 4?
(a) Yudhistir (b) Bheem (c) Arjun (d) Sahdev
8. Arjun and Nakul swapped their seats and then Yudhistir and Bheem swapped their seats. What is the color sequence of the kurtas from seat 1 to seat 5?
(a) Red, Blue, Green, Yellow, Purple
(b) Purple, Yellow, Green, Blue, Red
(c) Blue, Green, Yellow, Red, Purple
(d) Green, Red, Blue, Purple, Yellow

<https://www.toprankers.com/du-jat>

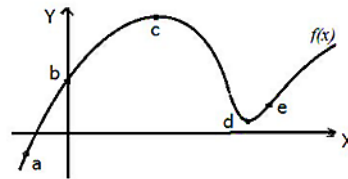
9. The figure provided below depicts the function $f(x)$. The values a, b, c, d and e are of the abscissa of the points shown in the figure. Decide which of the statements provided in the options is true?



- (a) $f(a)=0; f'(a)>0; f''(a)<0$
 (b) $f(a)>0; f'(a)>0; f''(a)<0$
 (c) $f(a)<0; f'(a)<0; f''(a)>0$
 (d) $f(a)<0; f'(a)>0; f''(a)<0$
10. The figure provided depicts the function $f(x)$. The values a, b, c, d and e are of the abscissa of the points shown in the figure. Decide which of the statements provided in the options is true?

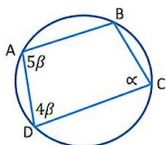


- (a) 'e' is a stationary point
 (b) 'e' is a point of inflexion
 (c) $f(x)$ is decreasing at 'e'
 (d) The ordinate of $f(x)$ is negative at 'e'
11. The figure provided depicts the function $f(x)$. The values a, b, c, d and e are of the abscissa of the points shown in the figure. Decide which of the statements provided in the options is true?



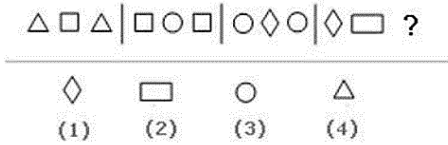
- (a) $f(b)>0; f'(c)=0; f''(d) < 0$
 (b) $f(b)>0; f''(c)=0; f(d)>0$
 (c) $f'(b)<0; f(c)>0; f'(d)=0$
 (d) $f'(b)<0; f(c)>0; f'(d)=0$
12. In the following options, three out of the four are same in a certain way to form a group. Find the odd one:
 (a) 27 (b) 64 (c) 15 (d) 50
13. In the following options, three out of the four are same in a certain way to form a group. Find the odd one:
 (a) DFIM (b) PRUX (c) OQTX (d) JLOS
14. Find the alternative which will replace the question mark.
 K/T: 16/20 :: J/R : ?
 (a) 17/18 (b) 10/18 (c) 10/9 (d) 17/9
15. Find the alternative which will replace the question mark:
 JRKN: NNNK:: AYWD : ?
 (a) EUZA (b) DDDW (c) ECAH (d) EUAZ
16. If a certain language HEIGHT is coded as HGHEIT, what would be the code for the word REMOTE ?
 (a) EOERMT (b) ROTEME (c) RTOMEE (d) RMETOE

17. Given that
 $2^0 \square 2^1 \square 2^2 \square 2^3 \square 2^4 \square 2^5 \square 2^6 \square 2^7 = 47$
 where \square is either + or -. What is the right combination of these two mathematical operators to get the above result?
 (a) ++--++-+ (b) +-+-+--+ (c) +--+++-+ (d) +-+--+--+
18. Following is the addition of a One, Two, Three, and Four digit number.
 $\square + \square\square + \square\square\square + \square\square\square\square$
 where the boxes can be filled with digits 0 through 9 without repetition. What is the largest possible sum possible?
 (a) 8456 (b) 9556 (c) 10656 (d) 11756
19. There are three people A, B, and C, and by profession they are Painter, Actor, and Designer, but not in the same order. They have kids X, Y, and Z, and also not in the same order. It is known that • A is the father of X, but not a Painter • B is either a Painter or a Designer • C is an Actor, and is father of Y • Z is the son of a Painter What is the profession of X's father?
 (a) Painte (b) Actor (c) Designer (d) Not enough information to decide
20. What number should come next in the series?
 $\frac{1}{2}, \frac{1}{3}, \frac{1}{8}, \frac{1}{30}, ?$
 (a) $\frac{1}{64}$ (b) $\frac{1}{48}$ (c) $\frac{1}{144}$ (d) $\frac{1}{72}$
21. Which one does not belong with others?
 I. Swine Flu
 II. Middle East Respiratory Syndrome
 III. Severe Acute Respiratory Syndrome
 IV. Minamata Syndrome
 (a) I (b) II (c) III (d) IV
22. Brain : Synapses :: Lungs : ?
 (a) Thorax (b) Trachea (c) Bronchioles (d) Pleura
23. A pandemic is an epidemic that is spreading over multiple countries and continents. Which situation below is an example of a pandemic?
 I. A disease that affects a large number of people within a community, population, or region.
 II. A disease that is actively spreading and new cases substantially exceed from what was expected.
 III. A disease caused by a virus that mutates every fortnight and scientists are able to study how it is moving from one country to another from this mutation.
 IV. A rare disease that is present all over the world for many decades.
 (a) I (b) II (c) III (d) IV
24. Statements: All women athletes can dance. Some women dancers can play volleyball.
 Conclusions I: Women athletes can play volleyball.
 Conclusions II: Women volleyball players can dance.
 (a) Only conclusion I follows
 (b) Only conclusion II follows
 (c) Either I or II follows
 (d) Neither I nor II follows
25. Find the next number in the sequence:-
 6, 24, 60, 120, 210,.....
 (a) 300 (b) 336 (c) 360 (d) 386
26. AB and CD are parallel lines. Find the angle α

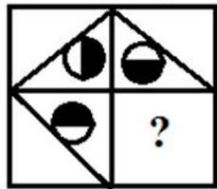


- (a) 50° (b) 60° (c) 70° (d) 80°

27. What is the missing symbol in the figure below?

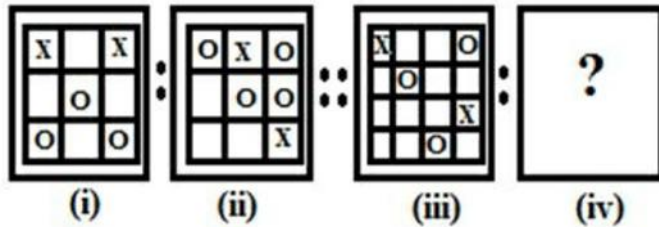


- (a) 1 (b) 2 (c) 3 (d) 4
28. For the series: 2, 4, 6, 10, __, 10, 12, 10, 14, 16 ..., what number should be filled in the blank?
 (a) 6 (b) 8 (c) 12 (d) 14
29. One day, Aman observed the time in the mirror image of the clock as 4 hours and 40 minutes. What is the actual time shown by the clock?
 (a) 8 hours 20 minutes (b) 7 hours 40 minutes
 (c) 7 hours 20 minutes (d) 8 hours 40 minutes
30. If + means divide, x means minus, % means multiply and - means plus, then find the value of $8 + 2 \% 3 - 7 \times 4 = ?$
 (a) 15 (b) 16 (c) 17 (d) 18
31. ZA5, Y4B, XC6, W3D, _?_
 (a) E7V (b) V2E (c) VE5 (d) VE7
32. Pipes A, B and C together fill a tank in 5hrs. Pipe C is twice as fast as pipe B and pipe B is twice as fast as pipe A. How much time will pipe A alone take to fill the tank?
 (a) 20 hours (b) 25 hours (c) 35 hours (d) 30 hours
33. Identify the figure that completes the pattern.



- (a)
- (b)
- (c)
- (d)

34. There is some relationship between diagrams (i) and (ii). The same relationship persists between (iii) and (iv). Find the correct diagram for (iv) from the given options.



- (a)
- (b)
- (c)
- (d)

35. Aman and Asha got married on Sunday, 5 December 1993. In which year will they next celebrate their anniversary on a Sunday?
 (a) 1997 (b) 1998 (c) 1999 (d) 2000
36. Here are some words translated from an artificial language. agnosvergos means Coppersmith Barbet delnosdeeryvergos means Brown Headed Barbet flenusdeeryagnos means Bald Headed Vulture Which word could mean "Brown Headed Vulture"?
 (a) agnosvergosdeery (b) delnosvergosdeery
 (c) delnosdeeryagnos (d) delnosdeeryvergos
37. Choose the one that does not belong to the group.
 (a) 6:18 (b) 4:13 (c) 5:16 (d) 7:22
38. Complete the sequence ACF, GIL, MOR, ?
 (a) STW (b) SUX (c) TVX (d) TVY

39.

$$f(x) = \begin{bmatrix} \cos x & -\sin x & 0 \\ \sin x & \cos x & 0 \\ 0 & 0 & 1 \end{bmatrix}$$

then which of the following are correct?

- I. $f(\theta) \times f(\phi) = f(\theta + \phi)$
 II. The value of the determinant of the matrix is $f(\theta) \times f(\phi)$ is 1.
 III. The determinant of $f(x)$ is an even function.
 (a) Only I (b) Only II (c) Only III (d) I, II and III

40. Let X be the set of all persons living in Delhi. The persons A and B in X are said to be related if the difference in their ages is at most 5 years. This relation is:-

- (a) an equivalence relation
 (b) a reflexive and transitive but not symmetric relation
 (c) a symmetric and transitive but not reflexive relation
 (d) a reflexive and symmetric but not transitive relation

41. Consider the following system of linear equations:

$$2x + 3y + 5z = 9$$

$$7x + 3y - 2z = 8$$

$$2x + 3y + \lambda z = \mu$$

Under what conditions does the above system of equations have a unique solution?

- (a) $\lambda = 5$ and $\mu = 9$
 (b) $\lambda \neq 5$ and μ has any real value
 (c) $\lambda = 5$ and $\mu = 7$ only
 (d) λ has any real value and $\mu \neq 9$

42. The value of the infinite product is $6^{\frac{1}{2}} \times 6^{\frac{1}{2}} \times 6^{\frac{3}{8}} \times 6^{\frac{1}{4}} \times \dots$ is:-

- (a) 6 (b) 36 (c) 216 (d) ∞

43. The number of real solutions of $1 + |e^x - 1| = e^x(e^x - 2)$ is:-

- (a) 0 (b) 1 (c) 2 (d) 4

44. If the roots of the equation $x^2 - 2ax + b = 0$ are real and distinct and they differ by at most $2m$, then b lies in the interval:-

- (a) $(a^2 - m^2, a^2)$ (b) $[a^2 - m^2, a^2)$
 (c) $[a^2, a^2 + m^2]$ (d) $(a^2, a^2 + m^2)$

45. If the sum of the coefficients in the expansion of $(a^2x^2 - 2ax + 1)^{51}$ vanishes, then the value of is:-

- (a) 2 (b) -1 (c) 1 (d) -2

46. If $[x]$ denotes the greatest integer less than or equal to x , then the solution set of the inequality $\frac{[x]-4}{6-[x]} > 0$ is:-

- (a) $[4, 6)$ (b) $[5, 6)$ (c) $[5, 6]$ (d) $(5, 6)$

47. if $\frac{\log x}{3a+5b-8c} = \frac{\log y}{3b+5c-8a} = \frac{\log z}{3c+5a-8b}$ then xyz equals.

- (a) 1 (b) 0 (c) -1 (d) 2

48. The product of roots of the equation $\sqrt{9+x} + \sqrt{9-x} = 2$ is:-

- (a) 81 (b) 83 (c) -79 (d) -32

49. Persons A and B residing 5 kilometres apart decide to meet on the way by walking towards each other's residence. A walks at the speed of 5 km/hr while B does so at 4 km/hr. A starts walking 10 minutes after B has started. For how long will B walk before meeting A?

Choose the option closest to the answer.

- (a) 29 minutes (b) 39 minutes (c) 33 minutes (d) 43 minutes

50. Which cannot be the number of elements in the power set of any finite set?
 (a) 64 (b) 16 (c) 128 (d) 24
51. A depositor receives the same amount of interest from her two deposits with a bank earning interest at 8% and 20% per annum. What is the rate of interest received by the depositor on the entire deposit with the bank?
 (a) 13.8% (b) 11.4% (c) 14% (d) Information is insufficient
52. The number of ways in which 8 distinct hats can be distributed among 5 children is:-
 (a) 8^5 (b) 5^8 (c) 8_{P_5} (d) 40
53. The number of ways in which an examiner can assign 60 marks to 10 questions, giving not less than 2 marks to any question is:-
 (a) $40_{C_{10}}$ (b) $60_{C_{10}}$ (c) 49_{C_9} (d) $49_{C_{10}}$
54. If $f(x) = |x^2 - 5x + 6|$, then $f'(x)$ is equal to:-
 (a) $5 - 2x$ if $2 < x < 3$ (b) $2x - 5$ if $2 < x < 3$
 (c) $2x - 5$ if $2 \leq x < 3$ (d) $2x - 5$ if $2 < x \leq 3$
55. The probability of the availability of dragon fruit in the market on any given day is 0.5. What is the minimum number of days that a person should visit the market so that the probability of finding the fruit on at least one day is more than 0.9?
 (a) 2 (b) 3 (c) 4 (d) 5
56. Let α and β be the roots of the equation $x^2 + x + 1 = 0$. The equation whose roots are α^{19}, β^7 is
 (a) $x^2 - x - 1 = 0$ (b) $x^2 - x + 1 = 0$
 (c) $x^2 + x - 1 = 0$ (d) $x^2 + x + 1 = 0$
57. If prices rise by 20% from the year 2010 to 2011, the value of one rupee of 2011 equals Rs. $1/1.2$ or Rs. 0.83 of the value of the rupee on 2010. Use this information to answer the following:
 A person has an income of Rs. 400,000 in 2015 and prices rise at the rate of 10% each year for the next three years. How much additional income should be paid to the person in 2018 so that the value of her income in terms of the rupees of 2015 is the same as her income in 2015?
 (a) Rs. 132,400 (b) Rs. 520,000 (c) Rs. 532,400 (d) Rs. 120,000
58. $2^X + 2^Y = 2^{X+Y}$, then the value of $\frac{dY}{dX}$ at $X = Y = 1$ is
 (a) 0 (b) -1 (c) 1 (d) 2
59. The area enclosed between the curves $y^2 = 4x$ and $x^2 = 4y$ is:-
 (a) $\frac{16}{3}$ (b) 8 (c) $\frac{32}{3}$ (d) 16
60. A laboratory blood test is 95% effective in detecting a certain disease when it is, in fact, present. However, the test also yields a "false positive" result for 1% of the healthy person tested. (That is, if a healthy person is tested, then, with probability 0.01, the test result will imply he has the disease). It is given that 0.5% of the population actually has the disease. The probability that a person has the disease given that his test result is positive is:-
 (a) 1 (b) 0.5 (c) 0.333 (d) 0.25
61. A boat covers a certain distance downstream in 1 hour, while it comes back in 1.5 hrs. If the speed of the stream be 3 kmph, what is the speed of the boat in still water?
 (a) 15 kmph (b) 13 kmph (c) 14 kmph (d) 12 kmph
62. Statements given in column P are either necessary or sufficient for statements given beside these in column Q.

Column P	Column Q
I. $A \cup B = \emptyset$	$B = \emptyset$
II. $f'(a) = 0$	Differentiable function $f(x)$ has a maxima at $x = a$
III. $4x + 3 \geq 11$	$x \geq 1$
IV. $x < 4$	$x^2 < 16$

Choose the correct answer for the four statements given in the provided options.

- (a) I. Sufficient; II. Necessary; III. Sufficient; IV. Necessary
 (b) I. Sufficient; II. Sufficient; III. Necessary; IV. Necessary
 (c) I. Necessary; II. Necessary; III. Sufficient; IV. Sufficient
 (d) I. Necessary; II. Sufficient; III. Sufficient; IV. Necessary
63. John invested an amount of Rs 12,000 at the rate of 10% per annum at simple interest and another amount at the rate of 20% per annum at simple interest. The total interest earned at the end of one year on the total amount invested became 14% per annum. Find the total amount invested.
 (a) Rs 20,000 (b) Rs 22,000 (c) Rs 24,000 (d) Rs 25,000
64. The period of the function $f(x) = \sin \frac{2x+3}{6\pi}$ is:-
 (a) 2π (b) 6π (c) $6\pi^2$ (d) None of these
65. $\lim_{x \rightarrow \infty} \frac{x^n}{e^x} = 0$ (n integer), for
 (a) no value of n
 (b) all values of n
 (c) Only negative values of n
 (d) only positive values of n
66. In an examination, 65% students passed in Mathematics, 72% students passed in Economics and 45% passed in both. The percentage of students who failed in both the subjects is:-
 (a) 12% (b) 28% (c) 8% (d) 16%
67. Tea worth Rs. 126 per kg and Rs. 135 per kg is mixed with a third variety in the ratio 1:1:2. If the mixture is worth Rs. 153 per kg, the price of the third variety per kg should be:-
 (a) Rs 169.50 (b) Rs 170 (c) Rs 175.50 (d) Rs 180
68. If \bar{A} and \bar{B} are the complementary events of A and B such that $P(\bar{A}) = 0.4$, $P(\bar{B}) = 0.3$ and $P(A \cup B) = 0.9$, then what is the value of $P(\bar{A} \cup \bar{B})$?
 (a) 0.2 (b) 0.5 (c) 0.6 (d) 0.7
69. Who among the following is the current Chief Economist of International Monetary Fund (IMF)?
 (a) Kenneth Rogoff (b) Gita Gopinath (c) Maury Obstfeld (d) Kristalina Georgieva
70. What is India's rank in "Ease of Doing Business Rankings" recently released by World Bank in its report Doing Business 2020?
 (a) 78 (b) 52 (c) 63 (d) 115
71. Who among the following won the Nobel Peace Prize in the year 2019?
 (a) Peter Handke (b) Abiy Ahmed (c) Michel Mayor (d) Michael Kremer
72. The Parker Probe mission launched by NASA was related to the study of:-
 (a) Moon (b) Sun (c) Jupiter (d) Mars
73. Which company among the following was acquired by Walt Disney Co. in 2019?
 (a) Viacom (b) Warner Bros (c) CBS Corporation (d) 21 Century Fox
74. Who among the following is the current National Security Advisor of India?
 (a) Gulshan Kumar (b) Ajit Doval
 (c) Ravi Shankar Parsad (d) Kanti Ghosh
75. Which female Indian cricketer won the BCCI C.K. Nayudu Lifetime Achievement award for 2019?
 (a) Shafali Verma (b) Harmanpreet Kaur (c) Anjum Chopra (d) Mithali Raj

76. Central Vista Project is related to which of the following?
 (a) Central government project to create a corridor between Delhi and Mumbai
 (b) Expansion and Renovation of existing Indian Parliament Buildings
 (c) A plan to construct a new office complex in Delhi
 (d) A freight corridor connecting Delhi and Ahmedabad
77. CMIE is a nomenclature for:-
 (a) Centre for Monitoring Invasion and Espionage Public Limited
 (b) Centre for Monitoring Indian Economy Private Limited
 (c) Centre for Managing Import and Export Private Limited
 (d) Centre for Monitoring Investment and E-commerce Private Limited
78. With which of the following company has Ministry of Electronics and Information Technology (MeitY) signed a statement of intent to roll-out 'Build for Digital India'?
 (a) Microsoft (b) Facebook (c) Google (d) Apple
79. Consider the function:

$$f(x) = \begin{cases} -2 \sin x & \text{if } x \leq -\frac{\pi}{2} \\ B + A \sin x & \text{if } -\frac{\pi}{2} < x < \frac{\pi}{2} \\ \cos x & \text{if } x \geq \frac{\pi}{2} \end{cases}$$

 which is continuous everywhere. What is the value of A?
 (a) 1 (b) 0 (c) -1 (d) -2
80. Consider the function:

$$f(x) = \begin{cases} -2 \sin x & \text{if } x \leq -\frac{\pi}{2} \\ B + A \sin x & \text{if } -\frac{\pi}{2} < x < \frac{\pi}{2} \\ \cos x & \text{if } x \geq \frac{\pi}{2} \end{cases}$$

 which is continuous everywhere. What is the value of B?
 (a) 1 (b) 0 (c) -1 (d) -2
81. Choose from the options the most appropriate antonym of the given word.
 NADIR
 (a) clone (b) peak (c) reject (d) timely
82. Choose from the options the most appropriate antonym of the given word.
 PANDEMONIUM
 (a) funny (b) immediate (c) peace (d) phonetic
83. Choose from the options the most appropriate antonym of the given word.
 ACRIMONIOUS
 (a) courtesy (b) latter (c) agrarian (d) economy
84. Read the statement and answer the question that follows.
 A conservation group in the United States is trying to change the long-standing image of bats as frightening creatures. The group contends that bats are feared and persecuted solely because they are shy animals that are active only at night. Which of the following, if true, would cast the most serious doubt on the accuracy of the group's contention?
 (a) Bats are steadily losing natural roosting places such as caves and hollow trees and are thus turning to more developed areas for roosting.
 (b) Bats are the chief consumers of nocturnal insects and thus can help make their hunting territory more pleasant for humans.
 (c) Bats are regarded as frightening creatures not only in the United States but also in Europe, Africa, and South America.
 (d) Raccoons and owls are shy and active only at night; yet they are not generally feared and persecuted.
85. Read the statement and answer the question that follows.
 Between 1975 and 1985, nursing-home occupancy rates averaged 87 percent of capacity, while admission rates remained constant, at an average of 95 admissions per 1,000 beds per year. Between 1985 and 1988, however, occupancy rates rose to an average of 92 percent of capacity, while admission rates declined to 81 per 1,000 beds per year. If the statements above are true, which of the following conclusions can be most properly drawn?
 (a) The average length of time nursing-home residents stayed in nursing homes increased between 1985 and 1988.

- (b) The proportion of older people living in nursing homes was greater in 1988 than in 1975.
- (c) Nursing home admission rates tend to decline whenever occupancy rates rise.
- (d) The more beds a nursing home has, the higher its occupancy rate is likely to be.

Directions (Q.86-Q.91): Read the following excerpt and answer the questions that follow:-

The new school of political history that emerged in the 1960's and 1970's sought to go beyond the traditional focus of political historians on leaders and government institutions by examining directly the political practices of ordinary citizens. Like the old approach, however, this new approach excluded women. The very techniques these historians used to uncover mass political behavior in the nineteenth-century United States – quantitative analyses of election returns, for example – were useless in analyzing the political activities of women, who were denied the vote until 1920. By redefining "political activity," historian Paula Baker has developed a political history that includes women. She concludes that among ordinary citizens, political activism by women in the nineteenth century prefigured trends in twentieth-century politics. Defining "politics" as "any action taken to affect the course of behavior of government or of the community," Baker concludes that, while voting and holding office were restricted to men, women in the nineteenth century organized themselves into societies committed to social issues such as temperance and poverty. In other words, Baker contends, women activists were early practitioners of nonpartisan, issue-oriented politics and thus were more interested in enlisting lawmakers, regardless of their party affiliation, on behalf of certain issues than in ensuring that one party or another won an election. In the twentieth century, more men drew closer to women's ideas about politics and took up modes of issue-oriented politics that Baker sees women as having pioneered.

86. The primary purpose of the passage is to:-
 - (a) Enumerate reason why both traditional scholarly methods and newer scholarly methods have limitations.
 - (b) Identify a shortcoming in a scholarly approach and describe an alternative approach.
 - (c) Provide empirical data to support a long-held scholarly assumption.
 - (d) Compare two scholarly publications on the basis of their authors' backgrounds.
87. The passage suggests which of the following concerning the techniques used by the new political historians described in the first paragraph of the passage?
 - (a) They involved the extensive use of the biographies of political party leaders and political theoreticians.
 - (b) They were conceived by political historians who were reacting against the political climates of the 1960s and 1970s.
 - (c) They were of more use in analyzing the positions of United States political parties in the nineteenth century than in analyzing the positions of those in the twentieth century.
 - (d) They were of more use in analyzing the political behavior of nineteenth-century voters than in analyzing the political activities of those who could not vote during that period.
88. It can be inferred that the author of the passage quotes Baker directly in the second paragraph primarily in order to:-
 - (a) Clarify a position before providing an alternative to that position.
 - (b) Differentiate between a novel definition and traditional definitions.
 - (c) Provide an example of a point agreed on by different generations of scholars.
 - (d) Provide an example of the prose style of an important historian.
89. According to the passage, Paula Baker and the new political historians of the 1960's and 1970's shared which of the following?
 - (a) A disregard for political theory and ideology.
 - (b) An interest in the ways in which nineteenth-century politics prefigured contemporary politics.
 - (c) A reliance on such qualitative techniques as the analysis of election returns.
 - (d) An emphasis on the political involvement of ordinary citizens.
90. Which of the following best describes the structure of the first paragraph of the passage?
 - (a) Two scholarly approaches are compared, and a shortcoming common to both is identified.
 - (b) An outmoded scholarly approach is described, and a corrective approach is called for.
 - (c) An argument is outlined, and counterarguments are mentioned.
 - (d) A historical era is described in terms of its political trends.
91. The information in the passage suggests that a pre-1960's political historian would have been most likely to undertake which of the following studies?
 - (a) An analysis of voting trends among women voters of the 1920's
 - (b) A study of male voters' gradual ideological shift from party politics to issue-oriented politics
 - (c) A biography of an influential nineteenth-century minister of foreign affairs
 - (d) An analysis of narratives written by previously unrecognized women activists

92. There are 4 sentences marked W, X, Y, Z. Choose from the given options the most logical sequence of these 4 sentences. W. At first appearance, it looks just like an ordinary, harmless, grasshopper. X. On a closer look, one can see its wings that enable it to fly long distances. Y. For farmers, one of the most dangerous insect pests is the locust. Z. A locust flies in a swarm with other locusts and attacks crops and destroys them.
 (a) WXYZ (b) ZWXY (c) YZWX (d) XYZW
93. There are 4 sentences marked W, X, Y, Z. Choose from the given options the most logical sequence of these 4 sentences. W. The current pack of 52 cards became the norm in the seventeenth century. X. The earliest reference to playing cards is found in tenth century China. Y. In the olden days these cards were used for playing games and telling fortunes. Z. They then appeared in Italy in the early fourteenth century.
 (a) XZYW (b) ZYXW (c) YWZX (d) WXYZ
94. Fill in the blanks with the most appropriate pair from among the 4 choices given.
 The railway track ran _____ the road and _____ a car or two, I could not see any traffic when I travelled that way last summer.
 (a) on, besides (b) beside, besides (c) by, apart (d) over, beside
95. Fill in the blanks with the most appropriate pair from among the 4 choices given.
 Even in the _____ Nordic countries, household chores are still not evenly distributed, but at least the language is changing. When a reporter asked a young Swedish father whether he helped with the child care, she was _____ for asking the wrong question. He did not "help, he did his share".
 (a) elitist, reprimanded (b) egalitarian, rebuked
 (c) prejudiced, admonished (d) nonpartisan, condemned
96. A sentence has been given in Active or Passive Voice. Change the voice by choosing the best option from among the 4 choices given. You must investigate the matter thoroughly and submit a report.
 (a) The matter should be investigated thoroughly by you and a report submitted.
 (b) The matter may be investigated thoroughly by you.
 (c) The matter has to be investigated thoroughly by you and a report submitted.
 (d) Please submit a report after investigating the matter thoroughly.
97. A sentence has been given in Active or Passive Voice. Change the voice by choosing the best option from among the 4 choices given.
 Do you imitate the fashion of others?
 (a) Is the fashion of others imitated by you? (b) Do others imitate your fashion?
 (c) Were you imitating the fashion of others? (d) Others are imitated by you?
98. A sentence has been given in Active or Passive Voice. Change the voice by choosing the best option from among the 4 choices given. That man who is walking in front is known to me.
 (a) That man who is walking in front of me has been known to me.
 (b) Known to me is that man who is walking in front of me.
 (c) Known by me is that man walking in front.
 (d) I know that man who is walking in front of me.
99. The given pair of words has a specific relationship. Choose from among the given options the pair with a similar relationship.
 ocean: whale
 (a) mountain: waterfall (b) river: boat (c) jungle: elephant (d) desert: oasis
100. The given pair of words has a specific relationship. Choose from among the given options the pair with a similar relationship. amiable: truculent
 (a) kindred: unrelated (b) cold: freezing
 (c) weather: climate (d) trees: monkeys



ANSWER KEY

1. a	2. b	3. b	4. a	5. c	6. d	7. d	8. b	9. d	10. b
11. a	12. a	13. b	14. a	15. a	16. b	17. d	18. c	19. c	20. c
21. d	22. c	23. c	24. d	25. b	26. d	27. a	28. b	29. c	30. a
31. d	32. c	33. d	34. a	35. c	36. c	37. a	38. b	39. d	40. d
41. b	42. b	43. b	44. b	45. c	46. b	47. a	48. d	49. b	50. d
51. b	52. b	53. c	54. a	55. c	56. d	57. a	58. b	59. a	60. c
61. a	62. a	63. a	64. c	65. b	66. c	67. c	68. c	69. b	70. c
71. b	72. b	73. d	74. b	75. c	76. b	77. b	78. c	79. c	80. a
81. b	82. c	83. a	84. d	85. a	86. b	87. d	88. b	89. d	90. a
91. c	92. c	93. a	94. b	95. b	96. c	97. a	98. d	99. c	100. a